

# CHISON

Value Beyond Imaging

## QBit 5 VET

Smart . Slim . Strong

[WWW.CHISON.COM](http://WWW.CHISON.COM)





**QBit 5 VET** is a compact and easy to operate veterinary ultrasound that provides complete solutions, quick and easy workflow, clear and accurate diagnostic images, extensive applications and veterinary packages .

It can be seamlessly applied in all small animals , exotics, equine and farm animals applications. CHISON has been focusing on ultrasound for over 20 years .

We have been integrating the best performance and innovative technologies into QBit 5 VET.



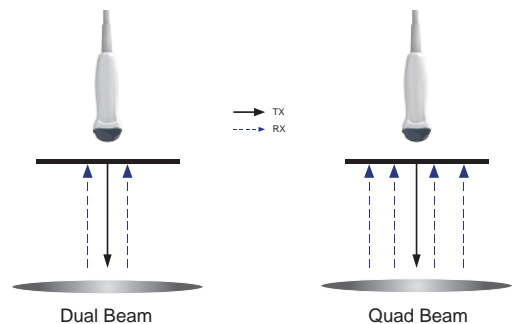
- Built-in battery ( optional ), excellent for VET condition
- Full screen display mode
- Triplex mode for easy diagnose
- Compact design, adapt to tiny clinics space
- Covering all examination needs in your diagnose

# Advanced Technologies



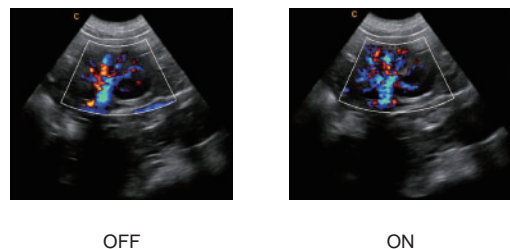
## Q-beam

- Compared to the traditional dual-beam, QBit 5 VET uses quad-beam to receive signal, thus doubles the volume of signal received as well as the frame rate.
- Higher frame rate ensures better diagnostic confidence and efficiency. Especially for rapid movement of small animals.



## Q-flow

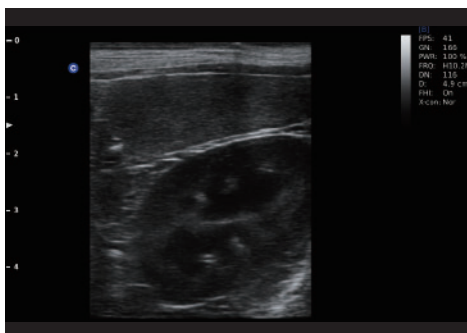
- This adaptive color detection technology can automatically adjust the criteria of color and noise assessment in different tissues.
- As a result, color sensitivity of low-velocity flow is greatly enhanced.



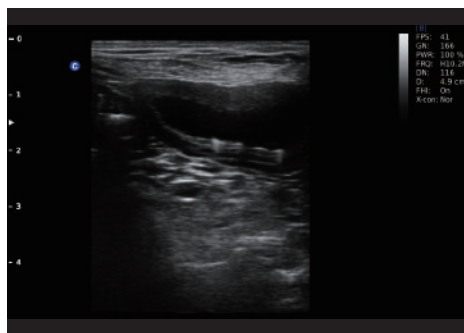
## Dedicated veterinary calculation package

Cardiology	Canine	Feline	Ovine	Equine	Bovine
Distance	GSD	HD	BPD	GSD	BPD
⊕ Single Plane	- CRL	- BD	- CRL	⊕ Volume	- CRL
⊕ Biplane Ellipse	- HD	⊕ Volume	- TD	⊕ Thyroid	- TD
⊕ Bullet Method	- BD	⊕ Thyroid	- GSD	⊕ Bladder Volume	⊕ Volume
⊕ Modified Simpson	⊕ Volume	⊕ Bladder Volume	⊕ Volume	Report	⊕ Thyroid
Report	⊕ Thyroid	Report	⊕ Thyroid		⊕ Bladder Volume
	⊕ Bladder Volume		⊕ Bladder Volume		Report
	Report		Report		

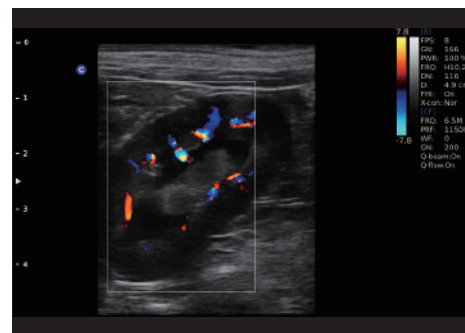
# Premium Image Quality



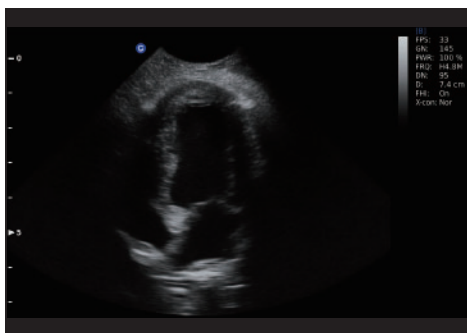
Canine kidney, B Mode



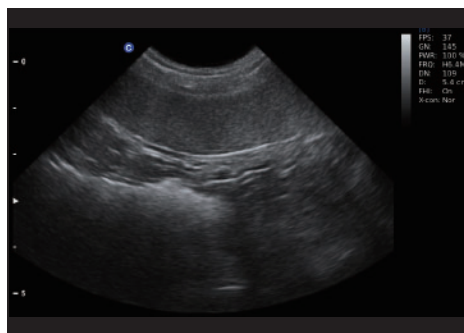
Canine Bladder, B Mode



Canine kidney, C Mode



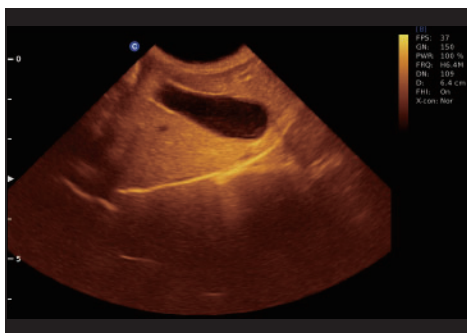
Canine Cardiac, B Mode



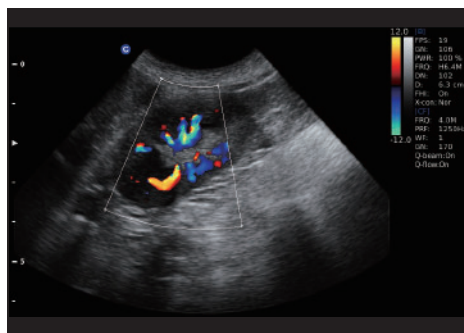
Canine Spleen, B Mode



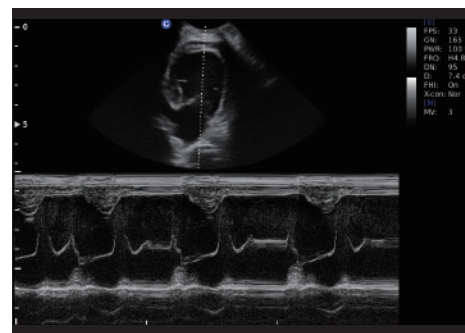
Canine kidney, B Mode



Canine Gall Bladder, B Mode



Canine kidney, C Mode



Canine Cardiac, M Mode



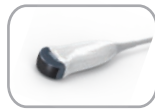
4.0MHz-15.0MHz Linear  
D7L40L



4.0MHz-12.0MHz Micro-Convex  
D6C15L



4.0MHz-10.7MHz Micro-Convex  
D5C20L



2.0MHz-6.8MHz Micro-Convex  
D3C20L



2.0MHz-6.8MHz Convex  
D3C60L



1.0MHz-5.3MHz Phased array  
D3P64L



5.0MHz-10.0MHz Trans-Rectal  
D7L40L-REC



4.0MHz-10.0MHz Linear Rectal  
D7L50L

Официальный  
дистрибьютор  
в РФ



RUSSIAN  
EXPORT  
COMPANY

## CHISON MEDICAL IMAGING CO., LTD.

### Sales & Service Contact Address:

No. 9 Xin Hui Huan Road, New District, Wuxi, Jiang Su Province, China214028

TEL: 0086-510-85310593 / 85310937 FAX: 0086-510-85310726 EMAIL: export@chison.com.cn

We reserve the right to make changes to this catalogue without prior notice  
Please contact our local dealer for the latest information.

Тел: (495) 972 2418  
(495) 972 9214  
info@rus-exp.com  
Сайт: rus-exp.com