



QBit7 vet

Smart Ultrasound



Ergonomics

FLUOWIC2

19" LED foldable
up & down for 0~90°



The LED screen can
be rotated left and right 0~90°
to allow different viewing
angles of patients and operators

Stereo audio system,
facing to operators.

Floating keyboard with
left/right rotation 0~45°,
up/down height adjustment
0cm~15cm

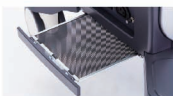


Streamlined workflow,
simplified keyboards
with backlit keys.



USB ports on the keyboard,
to allow easy access.

DICOM (option)



Removable dust filter.

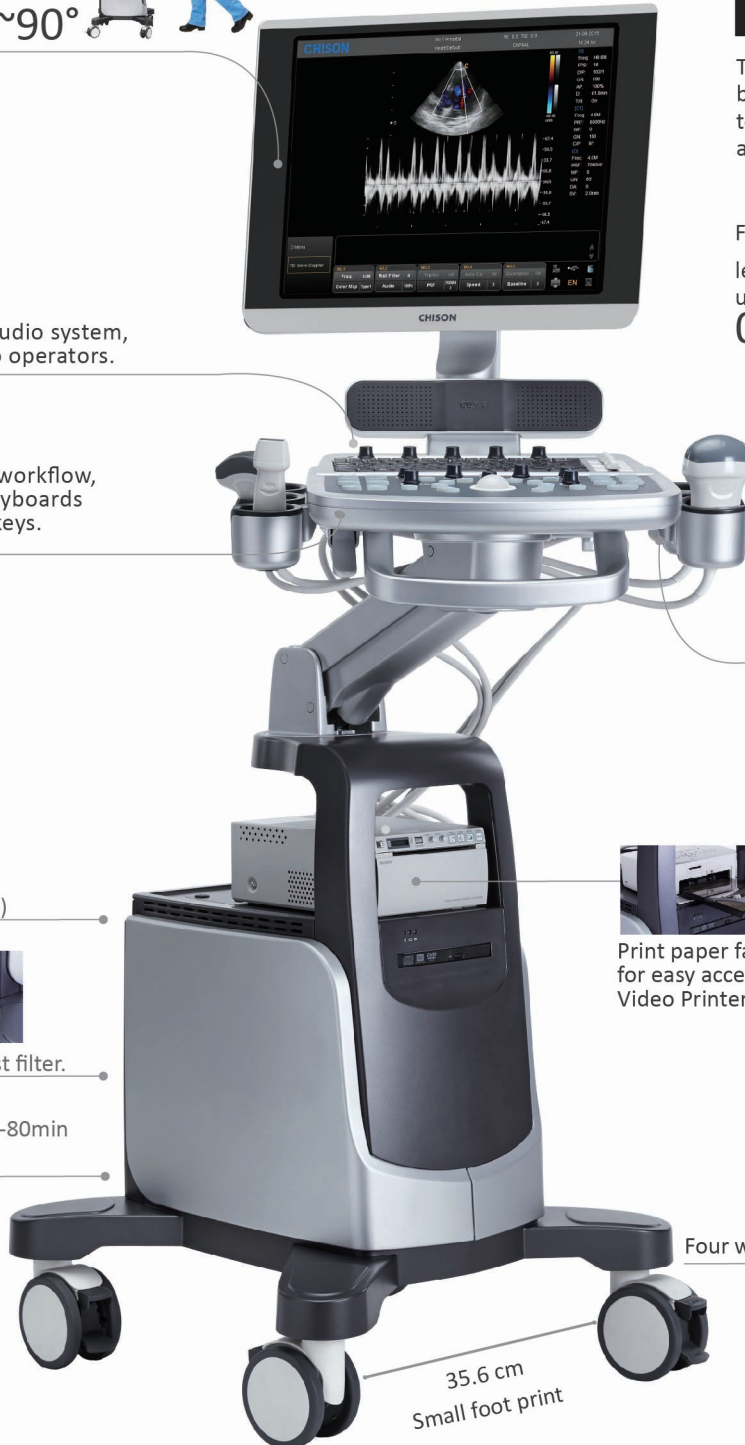
Built in battery-80min
(option)



Print paper face to the front,
for easy access.
Video Printer ,PC Printer

Four wheels with locks

35.6 cm
Small foot print

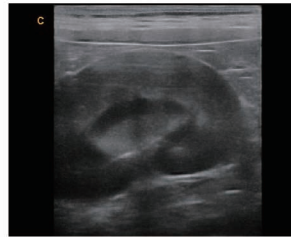


Advanced Technologies

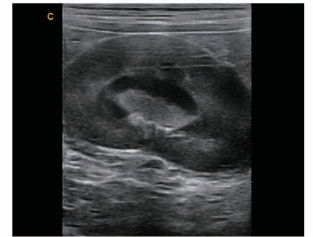


FHI

- An innovative technology that using different transmission and receiving methods for different body sized patients, to maximize the resolution without losing the penetration.
- Better than traditional THI and phased harmonic which compromise the penetration.



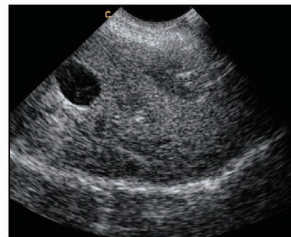
OFF



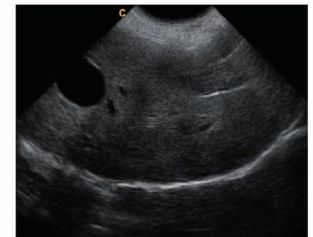
ON

Q-image

- These innovative algorithms have tripled the image enhancement results to a quantum level, images are sharper and details are more vivid.
- The advanced chipset ensure the frame rate.

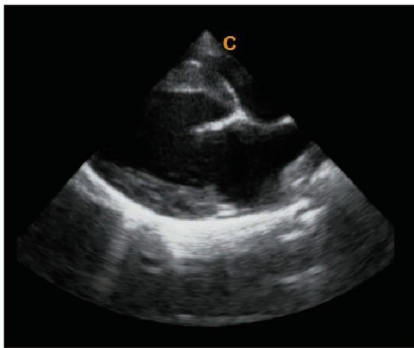


OFF

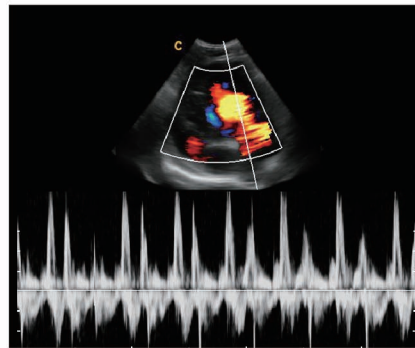


ON

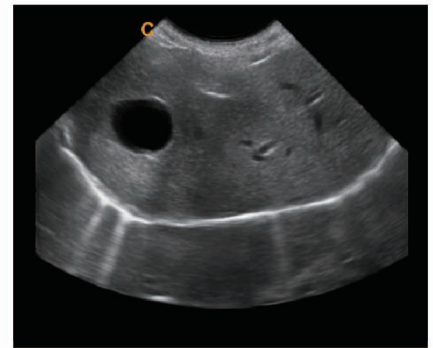
General Imaging



Canine Cardiac,B mode



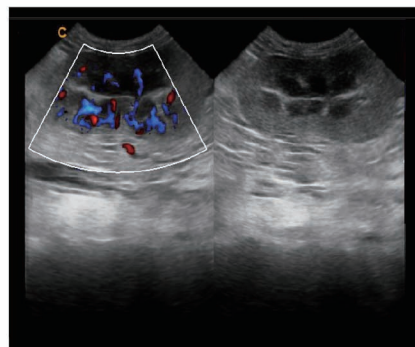
Canine Cardiac,PW mode



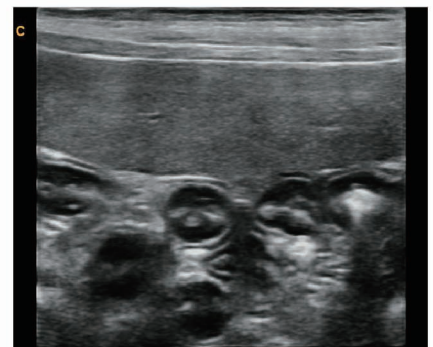
Canine Liver,B mode



Canine Kidney,C mode



Feline Kidney,B/BC mode



Canine Intestinal,B mode

Specifications

Imaging Modes

- B, 2B, 4B, B/M, 2D Steer
- B/BC, CFM
- PW, CW
- PD, Directional PD
- Trapezoidal
- Chroma B/M/PW

Professional Clinical Applications

- Feline
- Canine
- Equine
- Bovine
- Ovine

Image Processing Technologies

- FHI
- Speckle Reduction Algorithm (SRA)
- Multiple Compound Imaging (MCI)
- Q-image

Performance Beyond Exception

VET dedicated software:

Expert veterinary preset, measurement and bodymark

State of the art image technology:

Multiple beam former, Compound imaging, FHI, advanced color filter technology

Intelligent workflow:

One key optimization, Automatic PW trace in real time



2.0MHz-6.8MHz Convex
D3C60L



4.0MHz-15.0MHz Linear
D7L40L



7.0MHz-18.0MHz(with FHI) Linear
D12L40L



1.0MHz-5.3MHz Phased array
D3P64L



2.0MHz-6.8MHz Micro-Convex
D3C20L



4.0MHz-10.7MHz Micro-Convex
D5C20L



4.0MHz-12.0MHz Micro-Convex
D6C15L



2.0MHz-8.0MHz Phased array
D6P64L



4.0MHz-10.0MHz Linear Rectal
D7L50L-A

CHISON MEDICAL IMAGING CO., LTD.

Sales & Service Contact Address:

No. 9 Xin Hui Huan Road, New District, Wuxi, Jiang Su Province, China214028

TEL: 0086-510-85310593 / 85310937 FAX: 0086-510-85310726 EMAIL: export@chison.com.cn

We reserve the right to make changes to this catalogue without prior notice
Please contact our local dealer for the latest information.

EQBit7vet 1501020

Официальный
дистрибьютор
в РФ



RUSSIAN
EXPORT
COMPANY

Тел: (495) 972 2418
(495) 972 9214
info@rus-exp.com
Сайт: rus-exp.com