



NEW

ECO 5 VET

Ultra-Portable, Ultra-Affordable, Color doppler



CHISON

Value Beyond Imaging

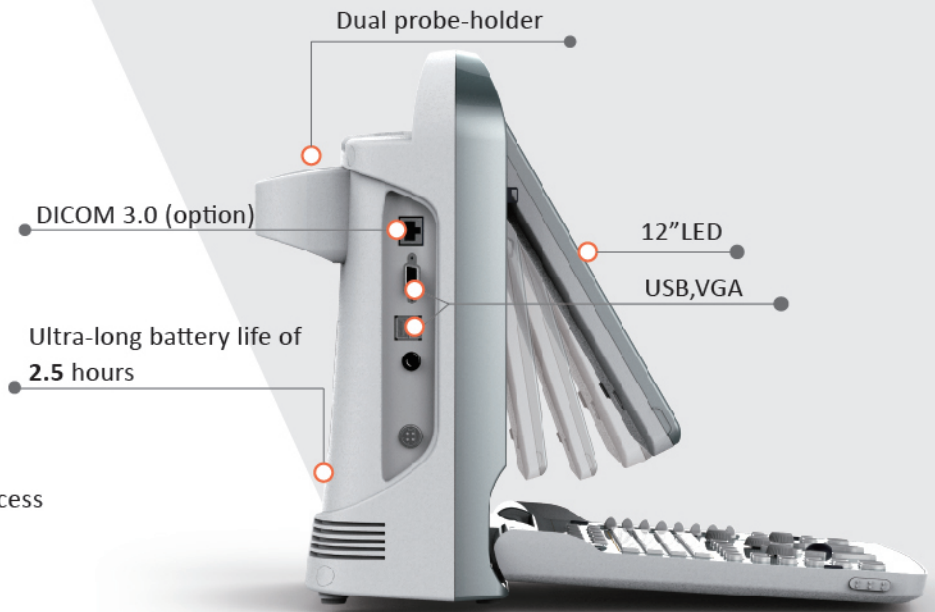
Ultra- compact, easy to carry with your car

Eco-friendly

- Less radiation
- Lower power consumption
- Longer life: LED

Ergonomic

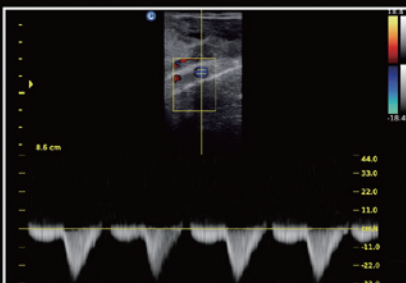
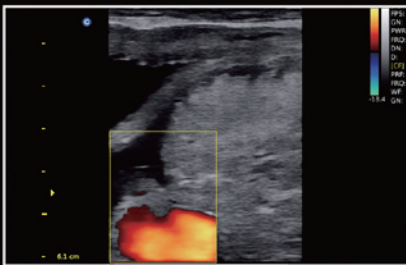
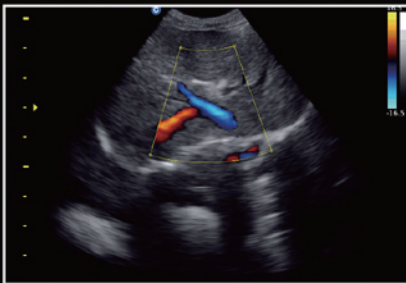
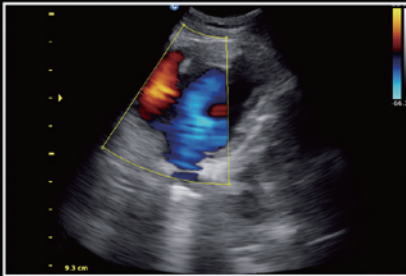
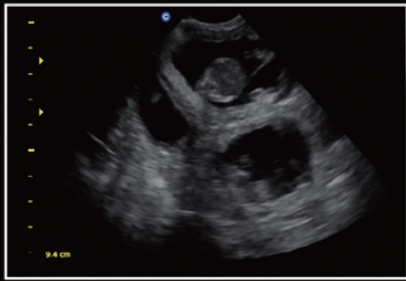
- Rotatable LED monitor (0~30°) : tailor to different viewing angles
- Unique LED: reduce eye fatigue
- Keyboard design: for easy and quick access
- Easy to learn and use (6-one-key step)
- Anti-water keyboard cover (option)



Excellent

- Full digital beam-former
- Color doppler technology
 - Double frame rate technology
 - Color priority
 - Color filter
- Applications
 - Abdomen, OB&GYN, Urology, Vascular,
 - Small Parts , Pediatrics, Basic Cardiology.
- Display modes: B, B/B, 4B, M, B/M, CFM, PW, Trapezoidal
- i-Image
- THI (Tissue harmonic imaging)
- SRA (Speckle reduction algorithm)
- Compound imaging





Efficient

Streamlined Workflow

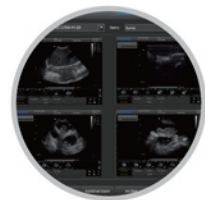
The multi-purpose user presets, comprehensive measurement & report system, built-in EasyView image archive system, quick image storage / retrieve / transfer, one-button direct print, make the complete workflow better than what you can dream of.



Various Measurements



Detailed Reports



EasyView Image Archive System

ONE KEY



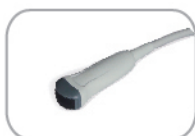
Support PC Printer



Specifications



Applications	Large animal: Reproduction, Tendon.
	Small animal: Abdomen, Small parts, Basic cardiology.
Display Modes	B, B/B, 4B, M, B/M, CFM, PW
Image Technology	Compound imaging, Trapezoid imaging, Chroma, i-Image, THI, SRA
Probe Frequency	2.5MHz - 11MHz (Depend on the probe types)
Cine Loop	256 frames
Zoom	4 steps
Measurement Packages	General Measurements, Canine: GS, CRL, HD, BD. Feline: HD, BD. Equine: GS. Bovine: BPD, CRL, Trunk Diameter. Ovine: BPD, CRL, Trunk Diameter.
Archives Management	Patient information management, Patient images record, Patient exam report.
Documentation	Full screen documentation, Hospital name, Patient name, Date/time
	Annotation database available, Pre-saved phrases can be recalled
Power Supply	AC 100V-240V, 50Hz- 60Hz
Standard Configuration	Main unit + Double probe connectors+ 3 USB ports +VGA port + Video port+Built-in Battery, LAN-port, 8G memory card
Option	320G Hard disk, DICOM 3.0, Water-proof keyboard cover, Carry Case (BG-100), PC Printer, TR-9000



4.5MHz - 8.0 MHz Micro-Convex
MC6-A



5.3MHz - 10.0 MHz Linear
L7M-A



5.3MHz - 11.0 MHz Linear
L7S-A



5.3MHz - 10.0 MHz Linear Rectal
L7V-A



4.0MHz - 7.0MHz Micro-Convex
MC5V-A



2.5 MHz - 5.0 MHz Convex
C3-A



2.5MHz-5.0MHz Micro-Convex
MC3-A



CHISON MEDICAL IMAGING CO., LTD.

Sales & Service Contact Address:

No. 9 Xin Hui Huan Road, New District, Wuxi, Jiang Su Province, China 214028

TEL: 0086-510-85310593 / 85310937 FAX: 0086-510-85310726 EMAIL: export@chison.com.cn

www.chison.com



We reserve the right to make changes to this catalogue without prior notice. Please contact us or your local dealer for the latest information.

*Please refer to the user manual for details.

E-ECO5VET-150203